

SHREEJI PALAZZO

A JOURNEY TO YOUR NEXT CHAPTER

YOUR PALATIAL HOME

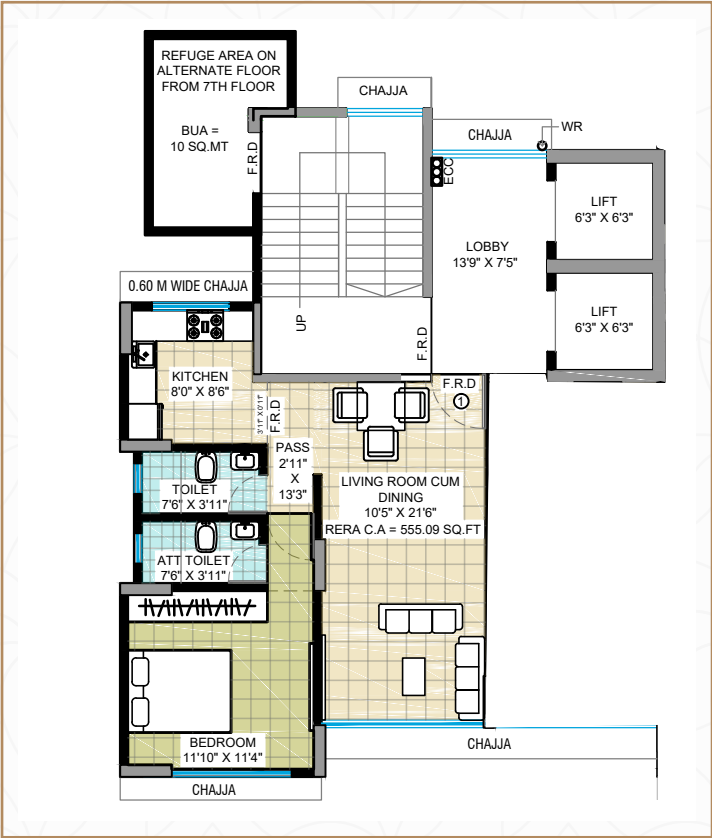
Located In the heart of Mumbai, Sion Circle
shreeji palazzo a thoughtfully designed residential project for
families who value both connectivity and comfort.

Spacious 1, 2 & 3 BHK Homes, Elevating everyday living with
effortless grace and refined luxury.



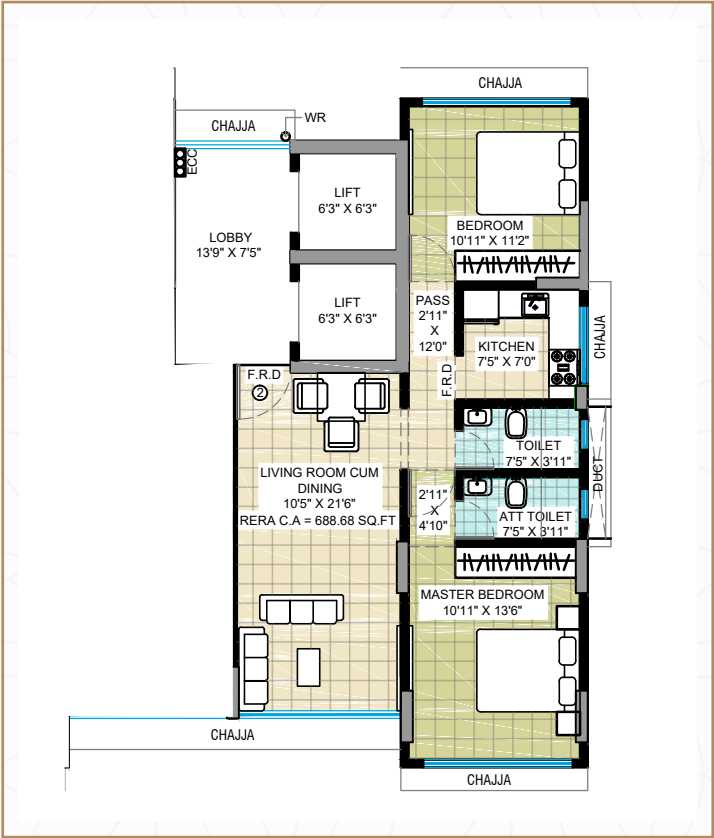
P51900055071

FLOOR PLAN



1 BHK

CARPET AREA-555



2 BHK

CARPET AREA-688

AMENITIES



AMPLE CAR PARKING



GYMNASIUM



TRIPLE HEIGHT LOBBY



PRIVATE CORRIDOR

LOCATION ADVANTAGES



SION CIRCLE

⌚ 1 minute walk



JAIN MANDIR DERASAR

⌚ 3 minutes drive | 7 minutes walk

Abhinandan Swami Jain Mandir



AIRPORTS

Chhatrapati Shivaji Maharaj (T-2)
International Airport

Domestic Airport (T-1), Santacruz



RAILWAY STATION

⌚ 5 minutes drive

Sion Station
King Circle Station
GTB Station



HOSPITALS

⌚ 15 minutes drive

SR Mehta Hospital (Sion)
Hinduja Hospital (Mahim)
Lilavati Hospital (Bandra)



SCHOOLS

⌚ 15 minutes drive

Don Bosco School (Matunga)
Bombay Scottish School(Mahim)
Dhirubhai Ambani International School (BKC)



COLLEGES & UNIVERSITIES

⌚ 15 minutes drive

Ramnarain Ruia College (Matunga)
Atlas SkillTech University (Kurla)
MET College (Bandra)





SHREEJI PALAZZO



 **7888117979**

SITE ADDRESS

Plot. No. 121 Of Sion Circle, Sion Matunga
Estate Division C.S 421/6, Road No.27, Sion (E) Mumbai-400022

Disclaimer: This is not an offer or invitation to offer. This information including elevations, photographs, visuals, pictures, details, specifications, dimensions, amenities, facilities, etc. are strictly provided for representative and illustrative purposes. The sale is subject to confirmation of the terms of Application Form and Agreement for Sale. The price, amenities and facilities mentioned herein are indicative, subject to change. It is not our representation or assurance of any nature whatsoever. The intending allottee has to satisfy himself on his own. Distance and timelines are approximate, calculated on Google Maps and may vary depending upon traffic, weather conditions and infrastructure facilities provided by concerned authorities



P51900055071